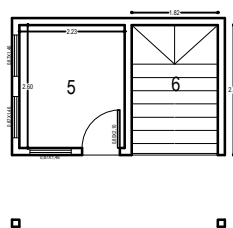
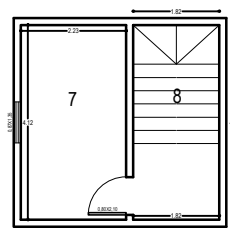


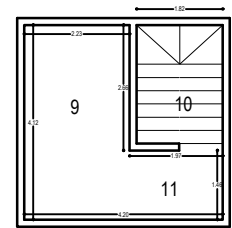
PLANTA BÁSICA  
SUBSOLO (LD)  
Área 19,89m²  
Escala



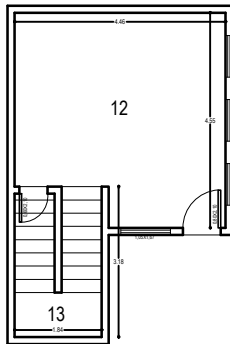
PLANTA BÁSICA  
TÉRREO (LD)  
Área 19,89m²  
Escala



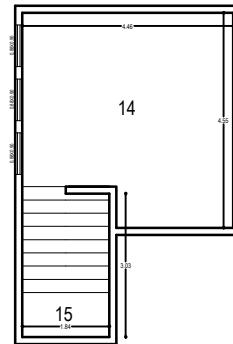
PLANTA BÁSICA  
PRIMEIRO ANDAR (LD)  
Área 19,89m²  
Escala



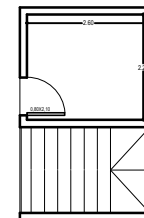
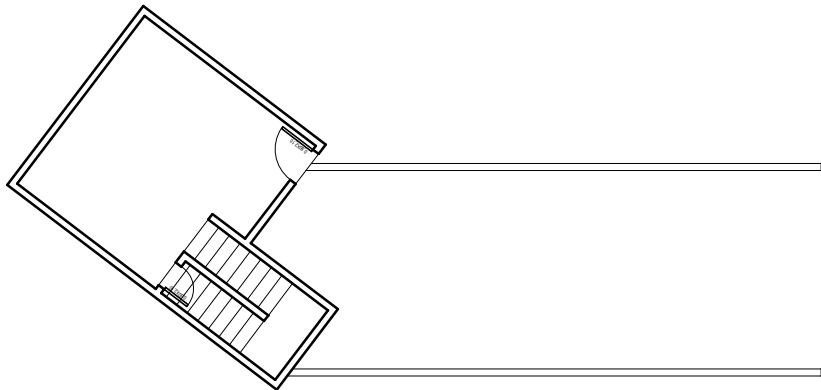
PLANTA BÁSICA  
SEGUNDO ANDAR (LD)  
Área 19,89m²  
Escala



PLANTA BÁSICA  
TÉRREO (LE)  
Área 28,02m²  
Escala



PLANTA BÁSICA  
PRIMEIRO ANDAR (LE)  
Área 28,02m²  
Escala



PROJETO:	
PROJETO BÁSICO DE REFORMA	
ENDEREÇO:	
BARRA LONGA-MG	
CONTEÚDO DA PRANCHA:	DATA:
PLANTA BAIXA	MAIO/2023
PROPRIETÁRIO:	
SECRETARIA MUNICIPAL DE CULTURA PREFEITURA DE BARRA LONGA	
RESPONSÁVEL TÉCNICO:	
LUCIANO MENDES PEREIRA ENG. CIVIL - CREA/MG 58.802/D	